

PRORIL

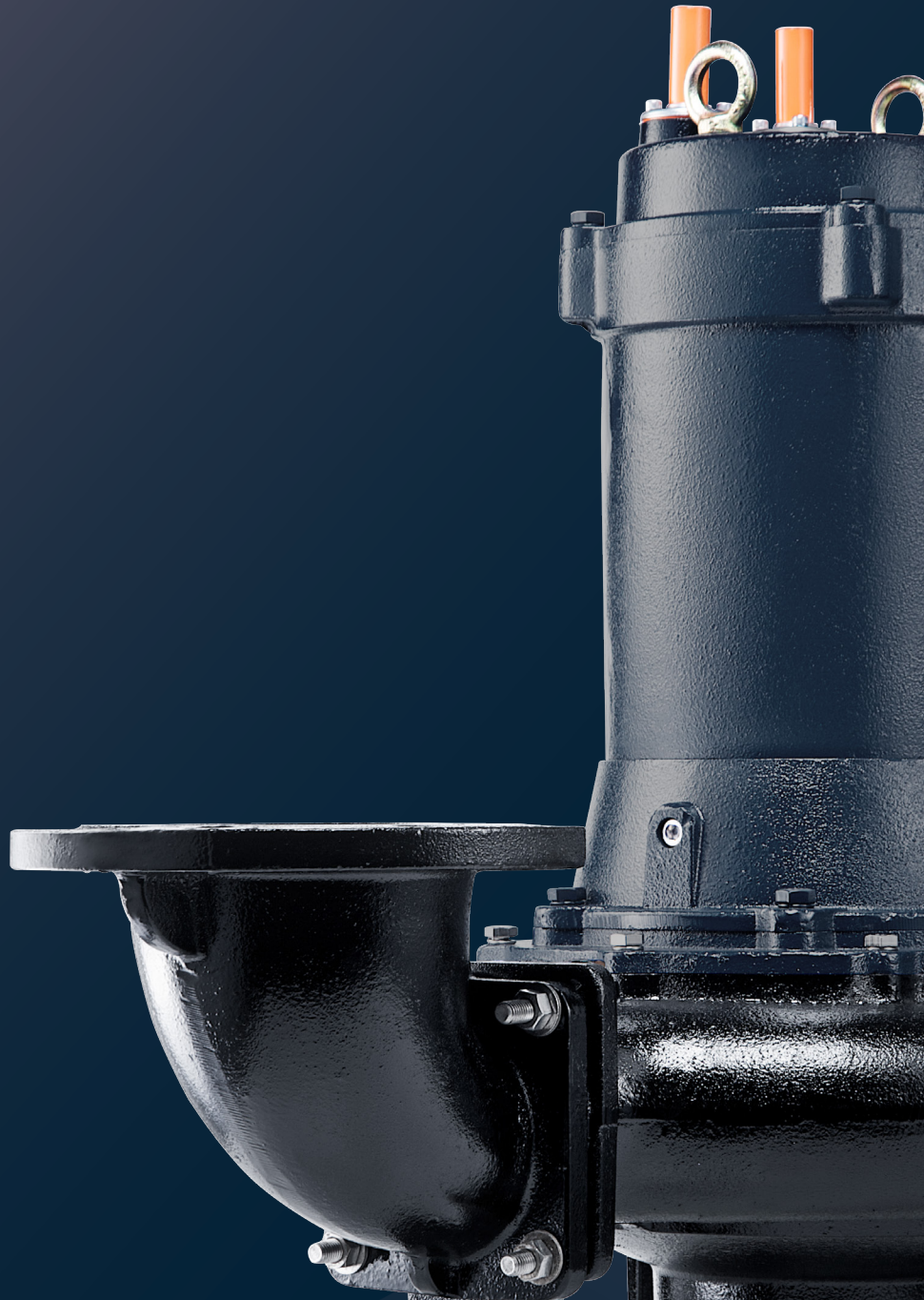
50Hz

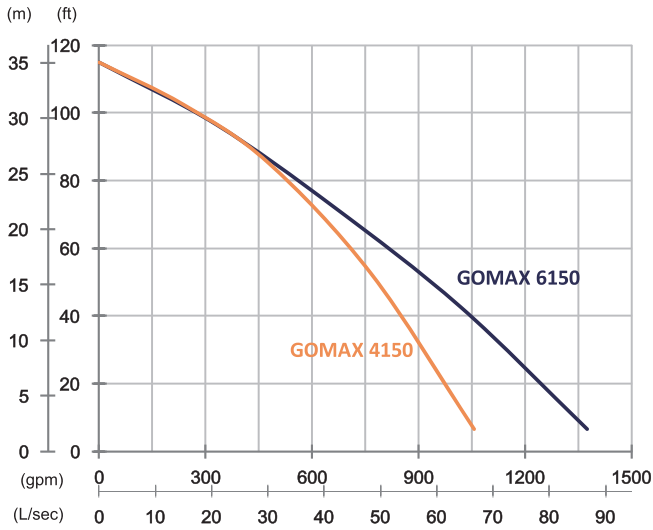
GOMAX Series, these non-clog pumps employ a single-channel enclosed impeller to efficiently and reliably transfer 76mm diameter solids without clogging. GOMAX series pumps are suitable for commercial and industrial wastewater applications.

Sewage Pump

GOMAX 4150/6150

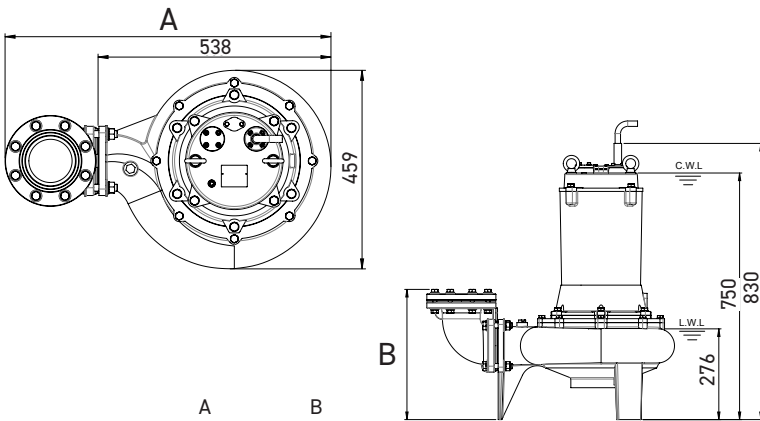
Single Channel Pump





	GOMAX 4150	GOMAX 6150
OUTPUT	15 kW (20 HP)	15 kW (20 HP)
OUTLET	4" (100 mm)	6" (150 mm)
SOLID PASSAGE	76 mm	76 mm
Weight	178 kg	186 kg
HEAD	Rated: 26 m Max: 35 m	Rated: 22 m Max: 35 m
FLOW	Rated: 30 L/s Max: 66.6 L/s	Rated: 41.6 L/s Max: 86.6 L/s

Pump Type		Electric Submersible Pumps	
Motor	Phase	3-Phase	
	Type	Induction Motor	
	Poles	4 Pole (1450 rpm)	
	Insulation	Class F	
	Protector		Star-Delta · Miniature Thermal Sensors
			D.O.L. · Circle Thermal Protector
Starter		Star-Delta, D.O.L.	
Lubricant		Food Grade (ISO VG32)	
Specs.	Impeller Type	Single Channel	
	Shaft Seal		Double Mechanical Seal
			Silicon Carbide VS Ceramic/Carbon
	Bearings		C3 Shielded ball bearings
	Cable	H07RN-F	10 m or longer upon request
Materials	Pump Casing		Gray Iron
	Impeller		Gray Iron
	Motor Frame		Gray Iron
	Motor Shaft		Stainless Steel
	Mouth Ring		Copper Alloy
Max. Liquid Temperature		40°C (104°F)	
Max. Submersion Depth		20 m (66 ft)	
pH Range		pH 5 - pH 8	
Guide Rail		GRN-04	



	A	B
GOMAX 4150	753	379
GOMAX 6150	813	452

unit : mm
C.W.L : Continuous running water level
L.W.L : Lowest running water level